

MIT-NESCAUM Seventeenth Annual Endicott House Symposium

New Directions in Energy Policy and Impacts on Air Quality



Praveen Amar, NESCAUM

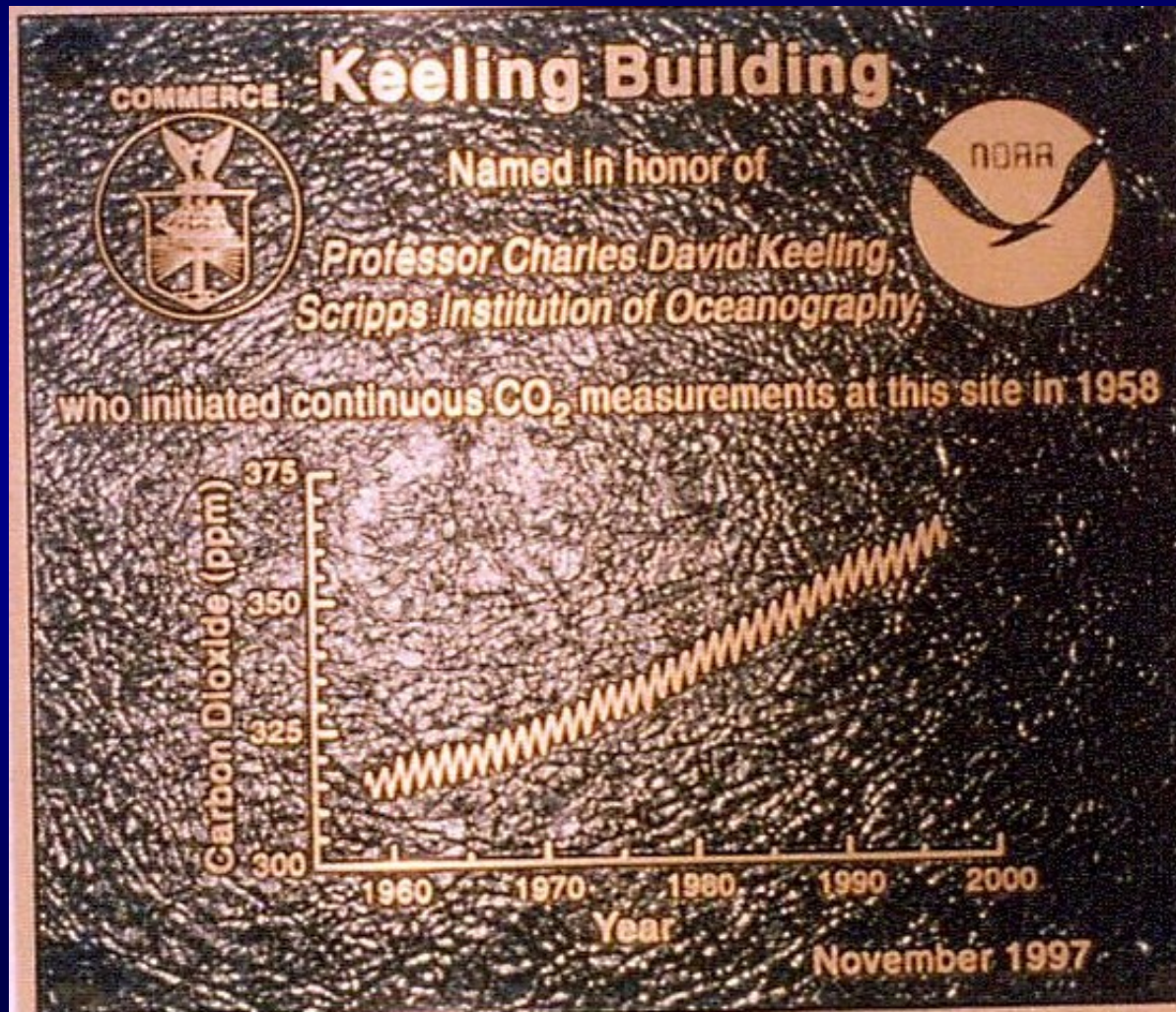
**Co-Chair, Endicott
Symposium**

pamar@nescaum.org

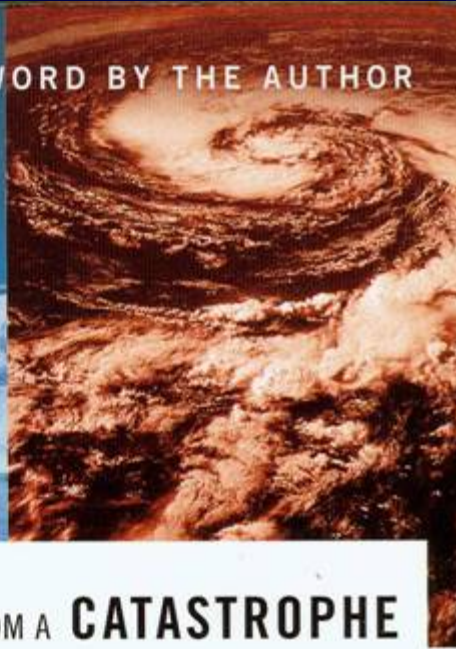
August 10-12, 2009

Keeling Curve (11,000 feet, Mauna Loa, Hawaii) : Very Predictable CO₂ Levels under Business-as-Usual Practices : 316 ppm in 1959, 379 ppm in 2005, 500 ppm expected in mid-century (exceeds by far the natural range over the last

650,000 years (180 to 300 ppm)



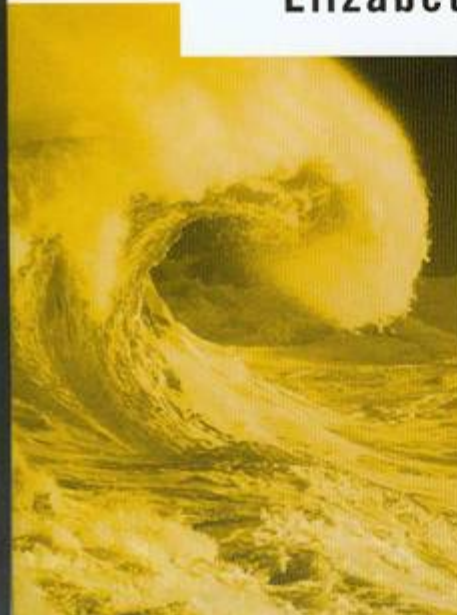
WITH A NEW AFTERWORD BY THE AUTHOR



FIELD NOTES FROM A CATASTROPHE

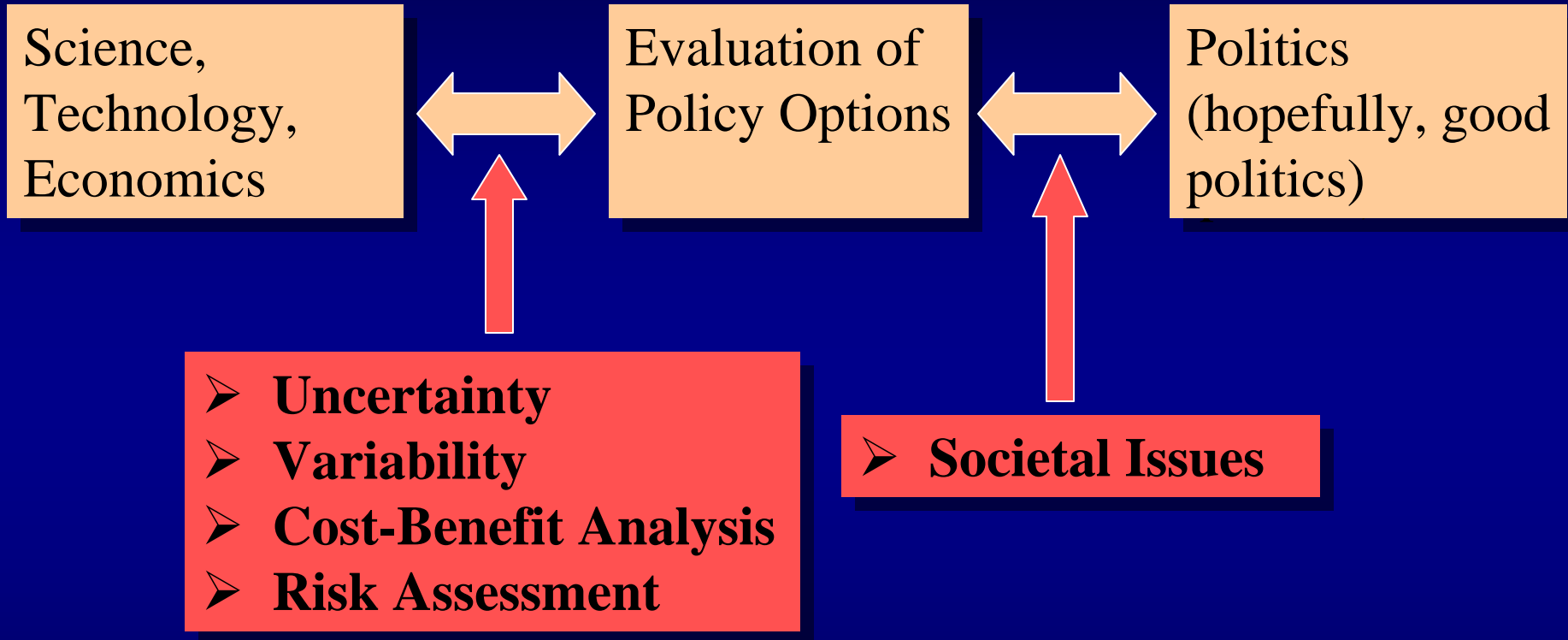
MAN, NATURE, AND CLIMATE CHANGE

Elizabeth Kolbert



"If you have time
this year for just one
book on science, nature or the
environment, this should be it."
—San Diego Union-Tribune

Where Does this Symposium Fit ?



“We will restore science to its rightful place.”

~President Obama’s Inaugural Address

John Allen Paulos

