



Northern Transportation & Air Quality Summit 2010

- Near Road Air Quality Assessment Studies Discussed in Today's Session
 - US95/Nevada DOT School Study
 - Development and Applications of Advanced Modeling tools for Project Analysis
 - Park Avenue PM Study
 - Vegetation Influences on Near-Road Air Quality

Northern
Transportation &
Air
Quality
Summit

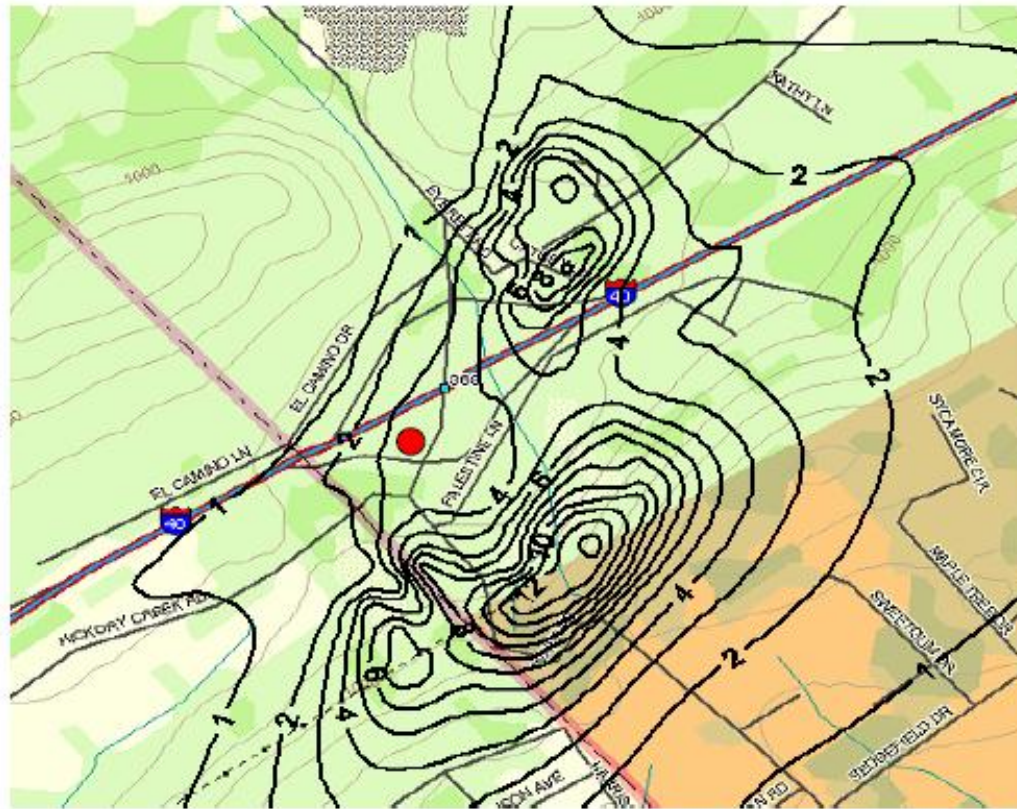


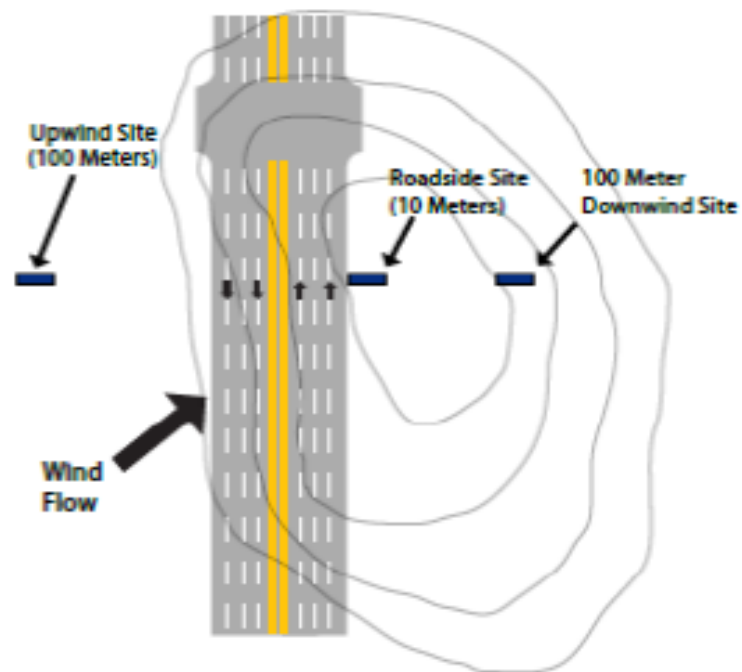
2010
Boston, MA

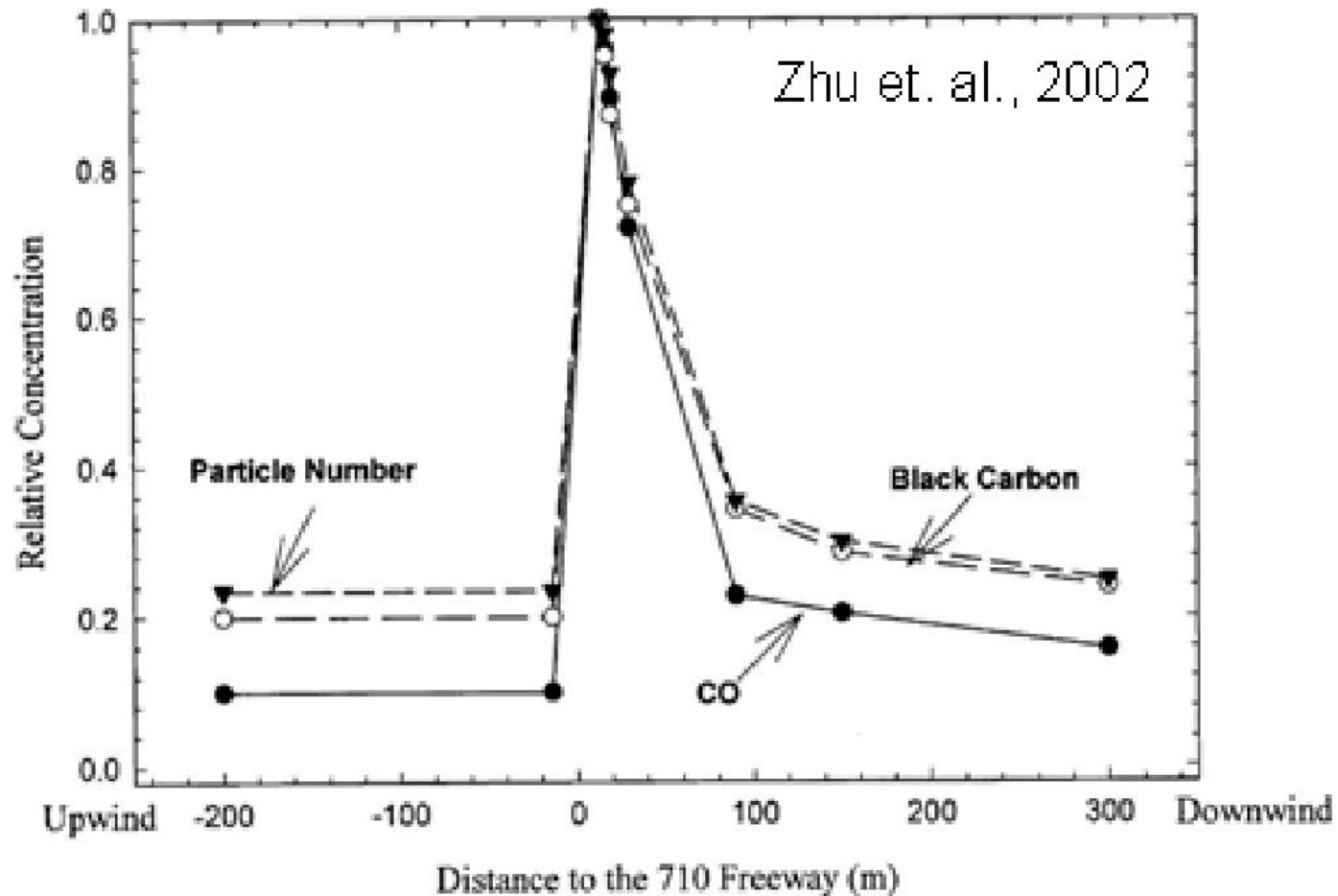
Northern Transportation & Air Quality Summit

2010









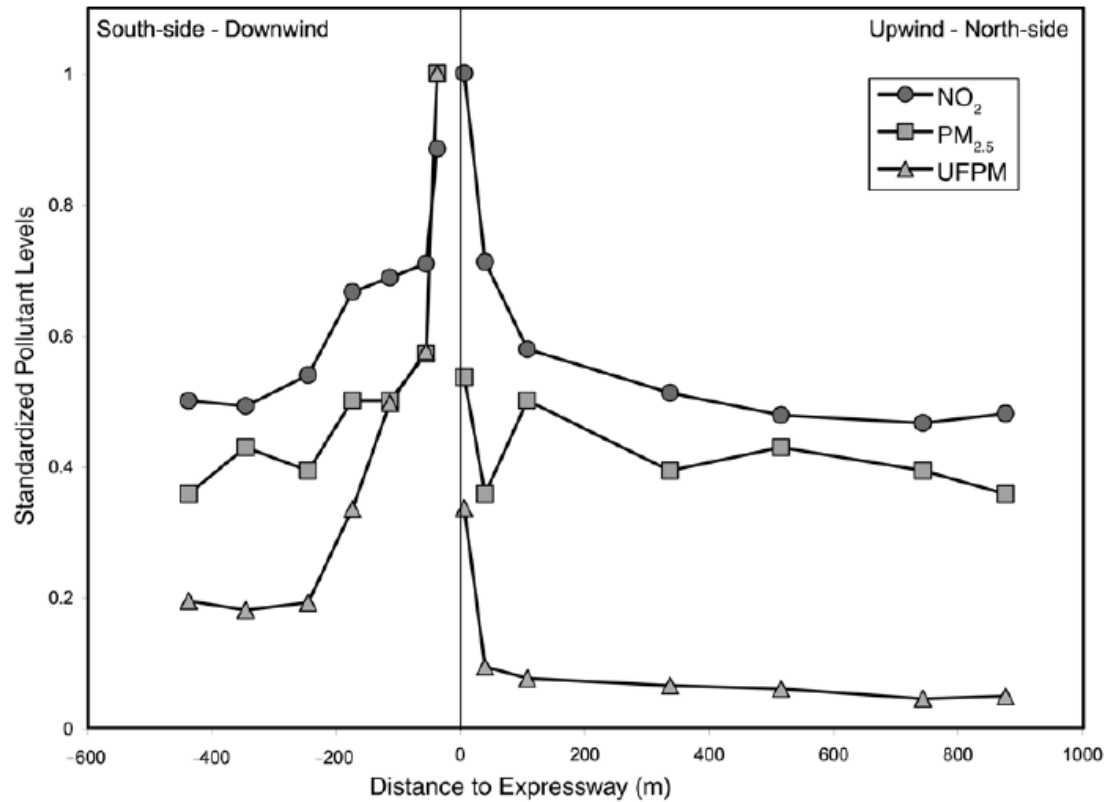


Figure 3.4. Distance-decay gradients of PM at the Bayview site in Toronto compared with those observed for NO₂. Gradients of PM_{2.5} and UFPM (ultrafine particulate matter) were similar to that of NO₂. The pollutants' gradient concentrations (y axis) were normalized by dividing each pollutant by the largest value observed at a given study site. (Reprinted from Beckerman et al. 2008, with permission of Elsevier.)

Schenley Park, Pittsburgh, PA
Particulate Matter 2.5 07-03-01, Tuesday

